

Credit: ESO





Credit: ESA/Hubble

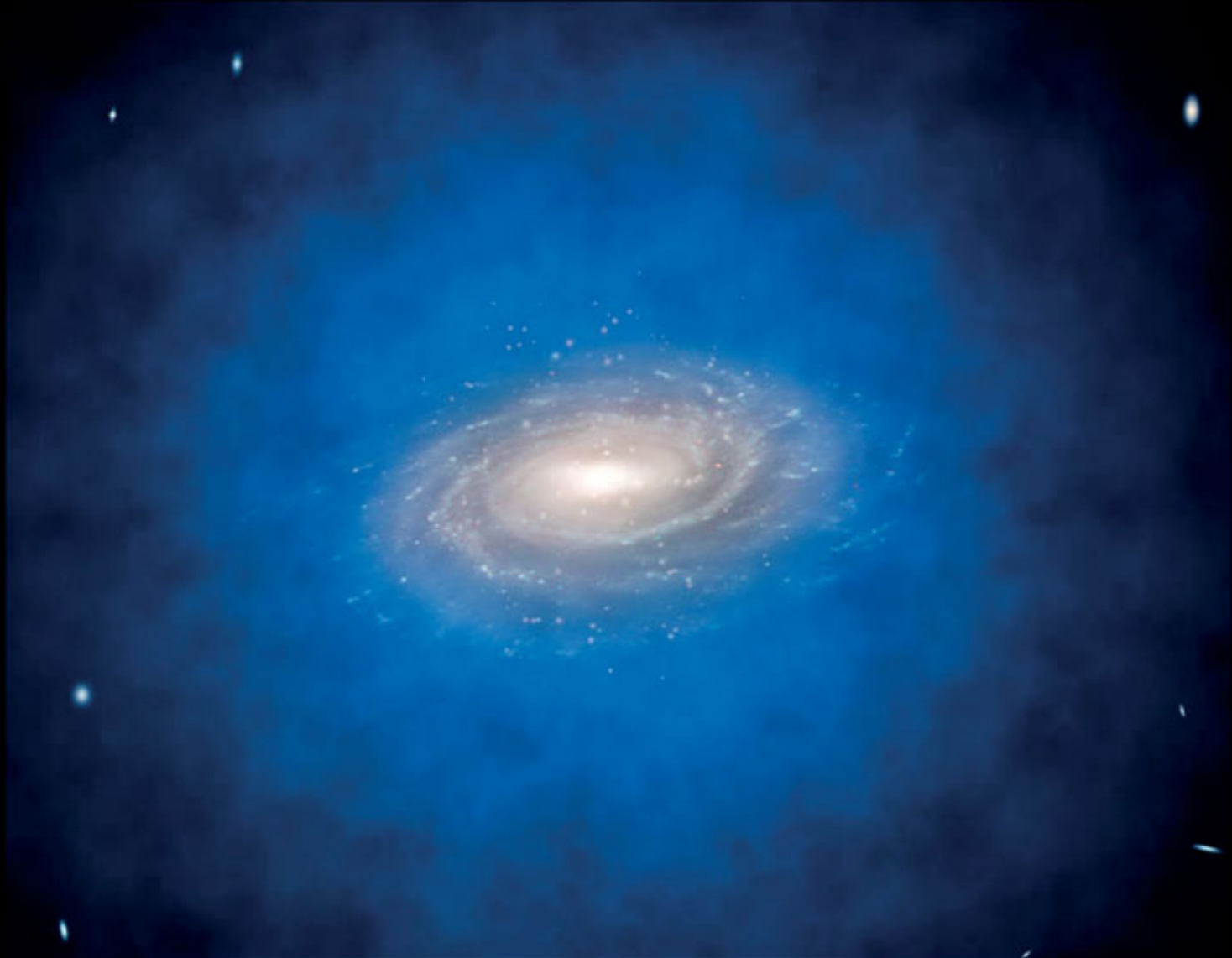
DARK MATTER

Dark Matter

\approx

10 x Luminous Matter

Dark Matter Halo

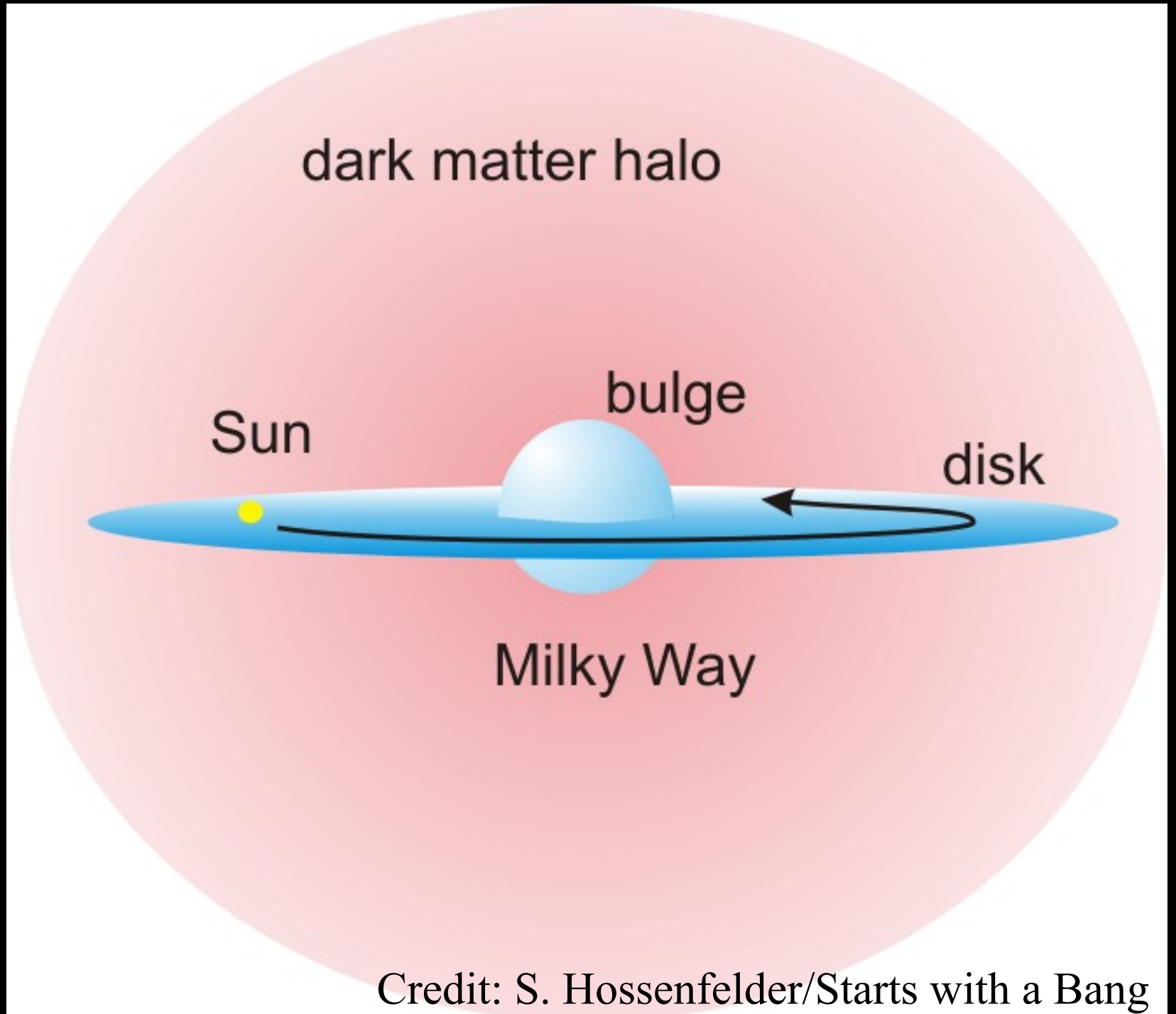


Credit: ESO/L Calçada

**What is this
Dark Matter?**

We do not know

Weakly Interacting Massive Particles

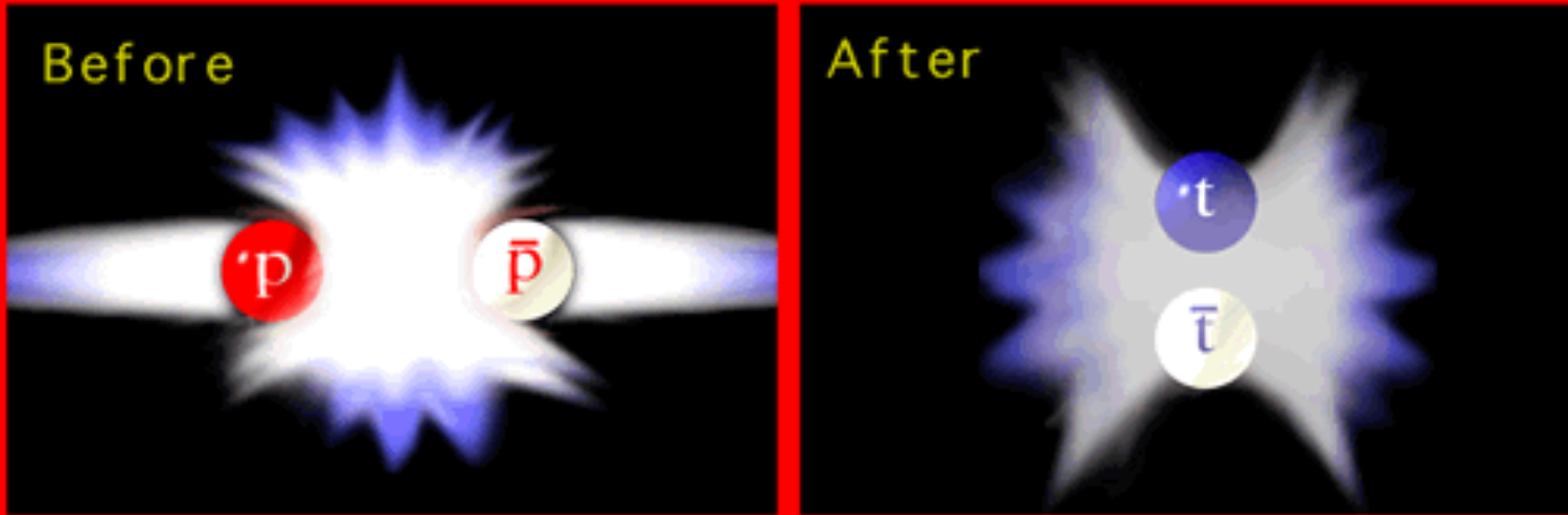


Credit: S. Hossenfelder/Starts with a Bang

Direct Detection

Indirect Detection

Searching in Colliders

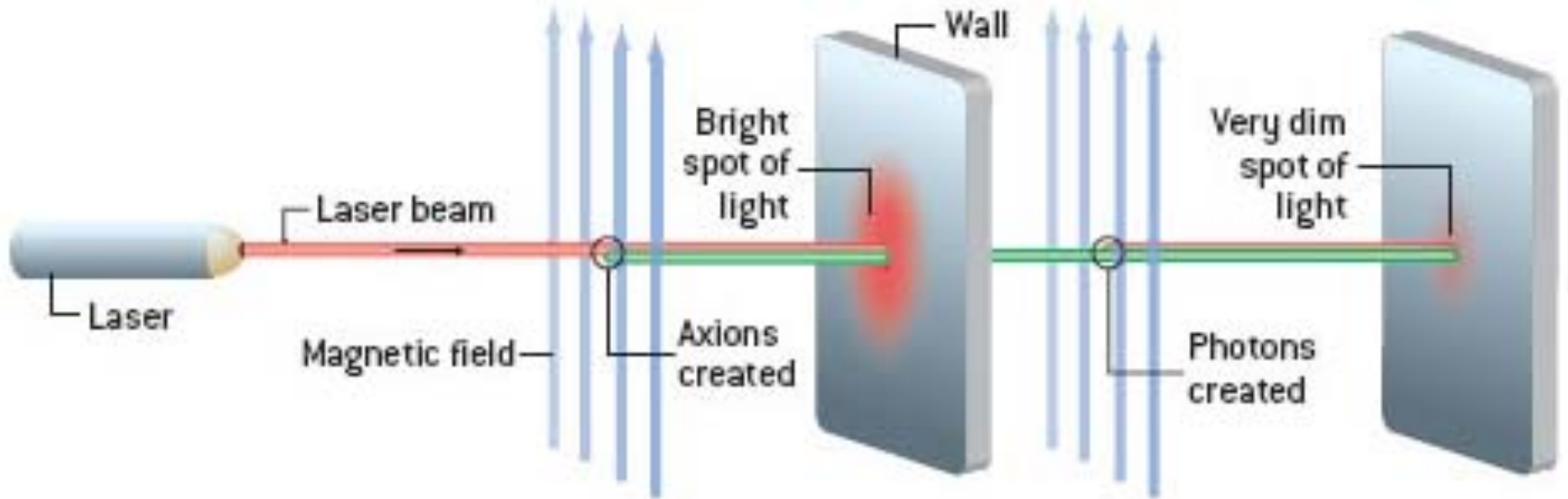


$$E = mc^2$$



27 km length 11,000 revolutions per second

Shining Light Through A Wall



Credit: Scientific American

What have we
discovered so far?

Large Hadron Collider

Shining Light Through A Wall

Direct Detection

Indirect Detection

**Where do we go from
here?**

Bigger and more
sensitive experiments

Paradigm shift